

2024 Ford Ranger Workshop



Vehicle Details

Manufacturer	Ford
Model	Ranger
Engine	Panther 2.0L Diesel Engine EURO IV
Drivetrain	Part Time 4-Wheel Drive
Transmission	6-Speed Manual or Automatic
Power (kW/PS)	125 kW or 155 kW at 3500 RPM
Torque (Nm)	405 Nm @ 1750-2500 rpm or 500 Nm @ 1750-2000 rpm
Fuel Tank Capacity	80L
Wheels	16" Steel
Tire	All Season

Dimensions of Modified Vehicle

Length w/ Rear Bumper (mm)	5370
Height (mm)	1828
Width (mm)	1910
Angle of Approach/Departure	28°/20°
Ground Clearance (mm)	235
Wading Depth (mm)	800
Curb Weight (kg)	1828
Gross Vehicle Weight (kg)	3100
Wheelbase (mm)	3220



FORD GLOBAL FLEET SALES



2024 Ford Ranger

Workshop

Standard Workshop Features

Ranger Single Cab w/ Pickup Box Removed & Cargo Box Van w/ Rear Access Doors Installed

Cargo Tie-Down Hooks

Electric Roof Mounted Fan In Rear Area

Heater In Rear Area

Hydraulic Jack, 5 Tons, Bottle Type



Second 12-volt Battery w/ Charging Relays & Disconnecting the Switch In Case of Primary Battery Failure



Portable Gas Cutting & Welding Equipment Set



Portable Diesel Powered Generator



Portable Air Compressor w/ 40 Liter Tank



Battery Charger



Engine Hoisting Crane 250kg @ 1.5m



Starter Cable Set



High Pressure Grease Pump



Air-Operated Impact Wrench w/ Sockets (metric)



Air-Operated Drill w/ Drill Bits



Test Lamp



Hydrometer & Resistor Type Battery Tester



Tool Kit w/ Complete Set of Wrenches, Sockets, Hammers, Screwdrivers & Pliers



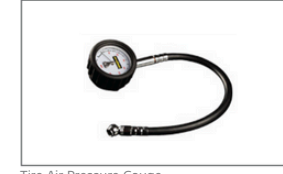
Independent Tent (8m x 4m) Made Of Heavy-Duty Waterproof Fabric



Vehicle Stand/Safety Prop 6 Tones x 2



Electrical Digital Multi-Tester



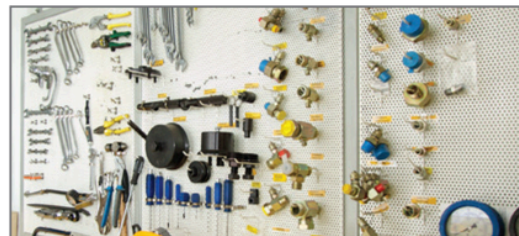
Tire Air Pressure Gauge



12 Volt Auxiliary Power Socket



Workshop Area is Equipped w/ Bolt-In Shelf Modules That Include Lockable Doors, Drawers, Plastic Bins, etc.



Workshop Area Equipped w/ Perforated Wall Liners For Tools Fixing



Workbench w/ Vise



Bench-Mounted Angle Grinder



Air Hoses On Reel and Recoiled for Air-Operated Tools



FORD GLOBAL FLEET SALES



2024 Ford Ranger

Workshop

Standard Features

Standard Duty Battery	Headrests for Driver, Co-Driver & Rear Seats
Hi-Low Range Gearbox	Glove Box
Front Suspension: Independent, Coil-Over-Strut	AM/FM Electronic Radio with Auxiliary Input
Rear Suspension: Rigid Rear Axle	Driver Seat Length Adjustable
Full Size Mounted Spare Wheel Tire, 16" Alloy	Washable Vinyl Seats, Dark Color for Driver & Passengers
Wheel Changing Equipment	Removable Rubber Mats for Driver & Passenger Footwalls
Power Assisted Steering	Vinyl Floor Throughout
Collapsible Adjustable Steering Column	Sun Visor for Driver & Co-Driver
Intermittent Front Washer Wiper	Grab Handles
Driver w/ Key Access	Front Door Map Pocket
Fuel Level Gauge	Front, Rear & Cargo Area 12 Volt Auxiliary Power Sockets
Recovery Eyes Fitted to Front Bumper or Chassis	Interior Light & Map Reading Light for Co-Driver
Steel Belt Radial Tires All Terrain Tubeless Type	Front Fog Lamps
Laminated Windshield	Rear/Side View Mirrors with Wide Angle of View
Air Conditioning & Heating System	Lockable Fuel Filler Cap
Ambient operable temp range -30°C to +50°C for standard areas	Rear Access Step, Folding or Rear Step Bumper

Safety Features

Power Front Disc Brakes	Anti-Theft Alarm System
Rear Drum Brakes	Central Door Locking System
Electric Parking Brake Systems	Oil Pressure Warning Light
3-Point Seatbelts for Driver & Co-Driver	Water Temperature Warning Light
Air Bag Protection for Driver & Co-Driver	Low Fuel Warning Light
Reverse Gear Warning Audible Warning Device	Alternator Malfunction Warning Light
Dual Circuit & Vacuum Assisted Hydraulic Brakes	ABS & ESP+
Door Ajar Warning Lamp	Parking Brake Warning Light
Door Side Impact Bars	Immobilizer Theft-Deterrent System

Notes: The company reserves the right to change the vehicle specifications and features described in this publication at any time. Vehicle specifications and features may vary in different markets. Images are for illustrative purposes only and may appear different from the actual vehicle. Some Features Shown Are Optional.



FORD GLOBAL FLEET SALES

